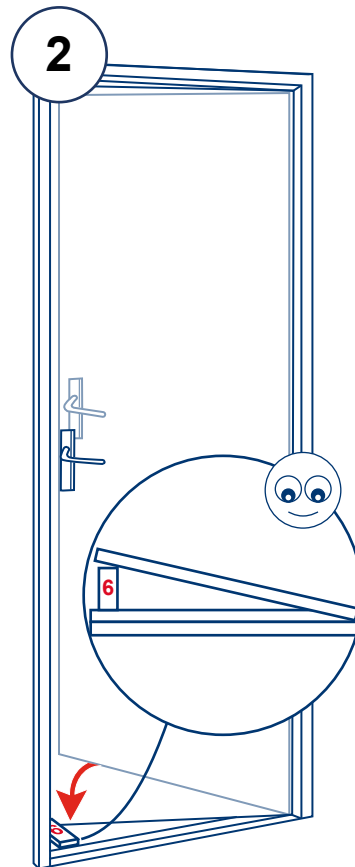
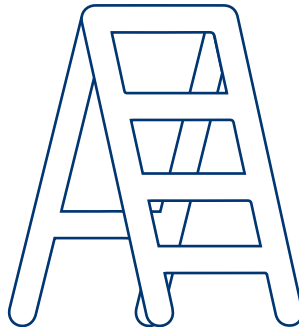
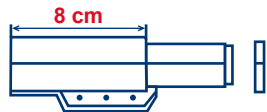
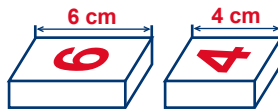
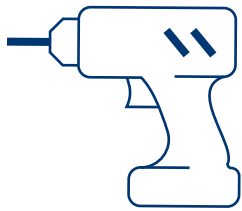


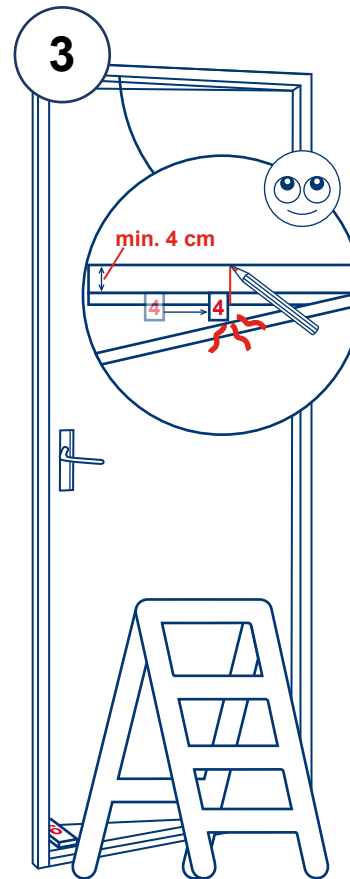
1

4 screws 39 x 16 mm  
aluminium door frames

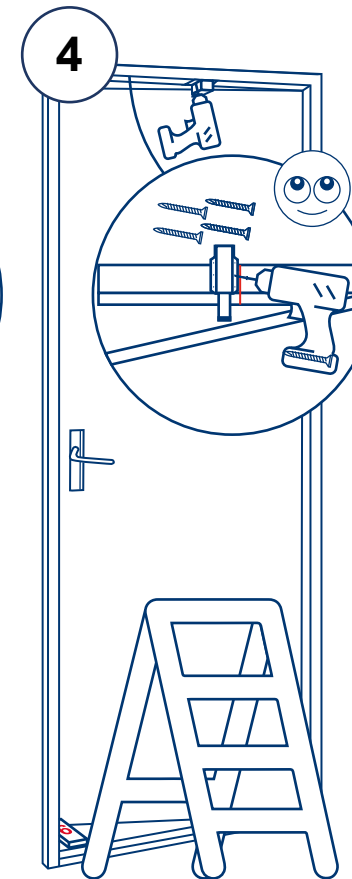
4 screws 40 x 19 mm  
wooden door frames



2



3



4



Use the right screws  
for your door post



Door post should have a  
minimum thickness of 4 cm  
There has to be at least 8 cm of  
free space from a closed door at  
the top side of the door frame

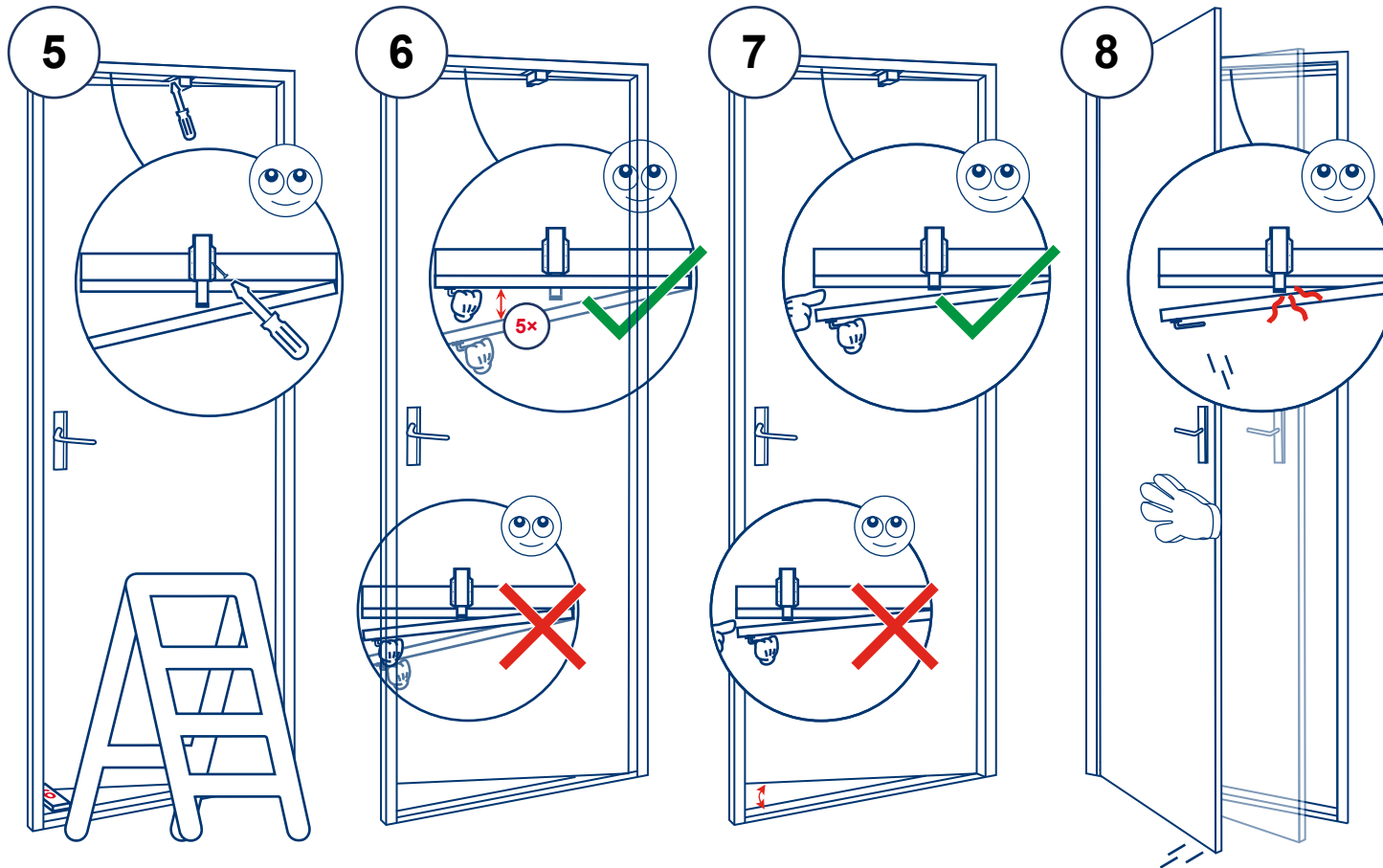


Put device on the top  
of the door frame only



#### DISCLAIMER

Arte Viva BV assumes no responsibility for any consequential, direct or indirect loss or damage suffered by any person or property, which is the result of a failure to install and/or use of the Finger Alert Anti-Slam as set forth in the above instructions, or based upon misuse, neglect or modification of the Finger Alert Anti-Slam



Spray WD40 on the pin and into the stopper, repeat once every 3 months



Step 7, 8 and 9 are to test the installation



Ensure that the product does not interfere with shutting the door